



May 27

# The SAPRIN Response to the Covid-19 Pandemic

Kobus Herbst, SAPRIN Director



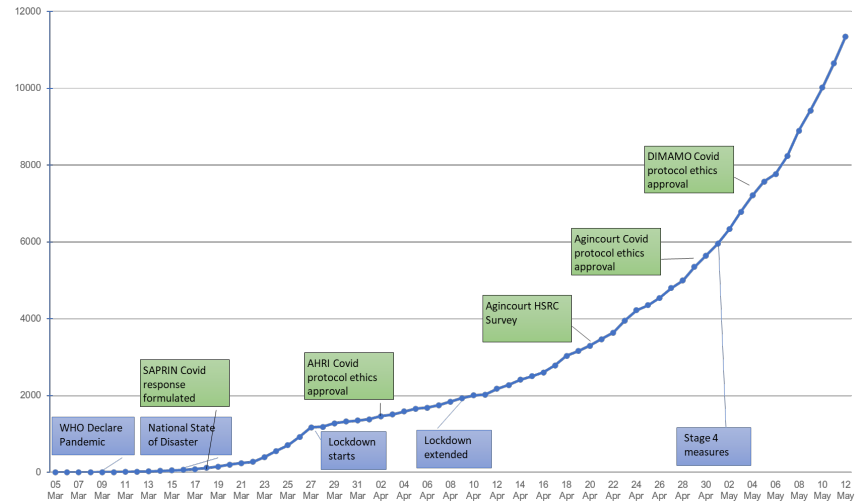
- Operational Implications
- Scientific Activities
- Limitations
- Future Prospects



350 000 study population

Existing Nodes In Development To be Developed

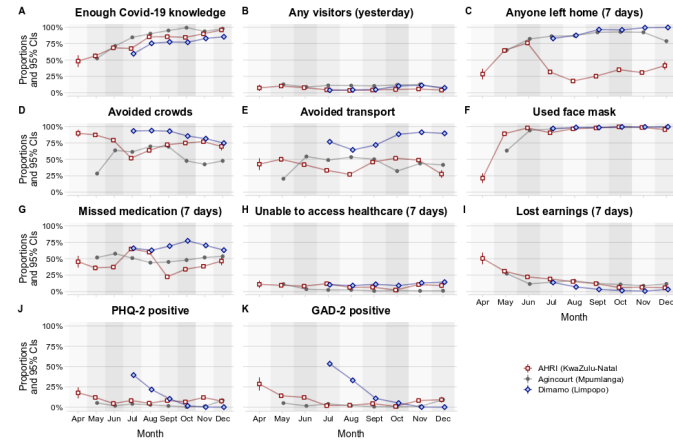
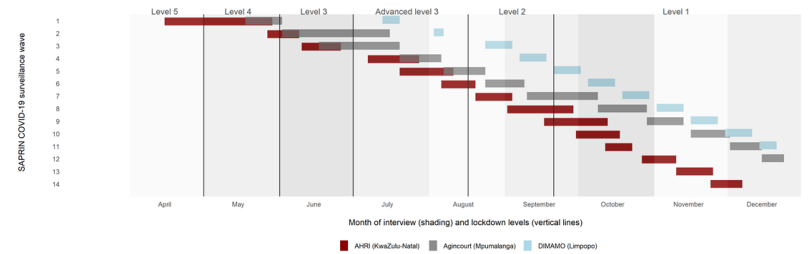
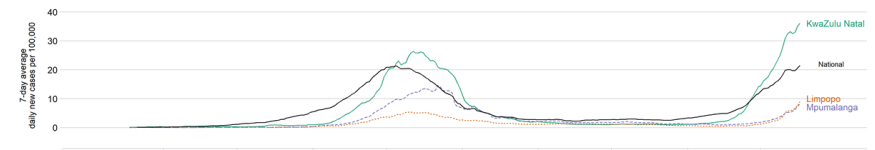
Confirmed COVID-19 Cases in South Africa  
Mar 5 to May 12, 2020



Siedner, M. J., Harling, G., Derache, A., Smit, T., Khoza, T., Gunda, R., ... & Herbst, K. (2020). **Protocol: Leveraging a demographic and health surveillance system for Covid-19 Surveillance in rural KwaZulu-Natal.** *Wellcome Open Research*, 5.



- Operational Implications
- Scientific Activities
- Limitations
- Future Prospects

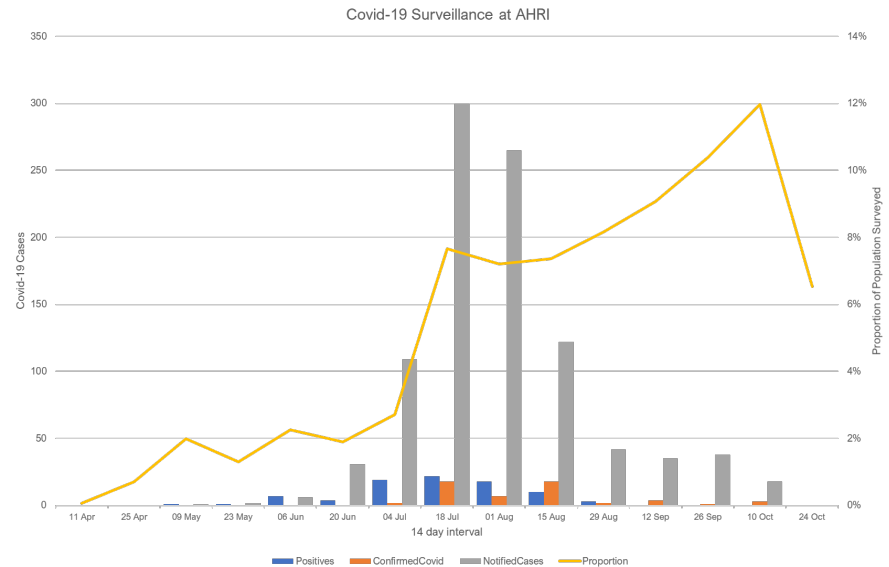


Harling, G., Gómez-Olivé, F. X., Tlouyamma, J., Mutevedzi, T., Kabudula, C. W., Mahlako, R., ... & Herbst, K. (2021). **Protective Behaviors and Secondary Harms Resulting From Nonpharmaceutical Interventions During the COVID-19 Epidemic in South Africa: Multisite, Prospective Longitudinal Study.** *JMIR Public Health and Surveillance*, 7(5), e26073.





- Operational Implications
- Scientific Activities
- Limitations
- Future Prospects



- For acute transient conditions such as Covid-19 difficult to obtain complete detection across cohort
- Sero-prevalence better picture but loses temporal resolution and complicated by vaccine roll-out



- 
- Operational Implications
  - Scientific Activities
  - Limitations
  - Future Prospects

- Currently assessing vaccine hesitancy
- Done work on assessing impact of pandemic on access to care
- Potential to link to electronic vaccine registry and look at barriers to vaccine uptake
- Impact of Covid-19 on all cause mortality

McIntosh, A., Bachmann, M., Siedner, M. J., Gareta, D., Seeley, J., & Herbst, K. (2021). **Effect of COVID-19 lockdown on hospital admissions and mortality in rural KwaZulu-Natal, South Africa: interrupted time series analysis.** *BMJ open*, 11(3), e047961.

Siedner, M. J., Kraemer, J. D., Meyer, M. J., Harling, G., Mngomezulu, T., Gabela, P., ... & Herbst, K. (2020). **Access to primary healthcare during lockdown measures for COVID-19 in rural South Africa: an interrupted time series analysis.** *BMJ open*, 10(10), e043763.





# Contact Information

Kobus Herbst  
kobus.herbst@mrc.ac.za  
<http://sapr.in.mrc.ac.za/>