



May 7th, 2020



The Brazilian Reference Genome Project

Lygia V. Pereira, Ph.D.
University of São Paulo



Global Genomic
Medicine Collaborative

Cell

Volume 177
Number 1

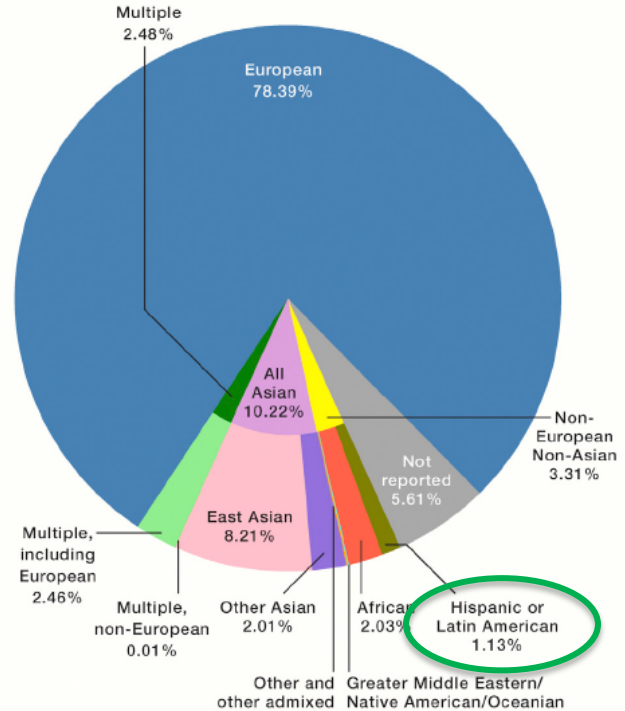
March 21, 2019

www.cell.com

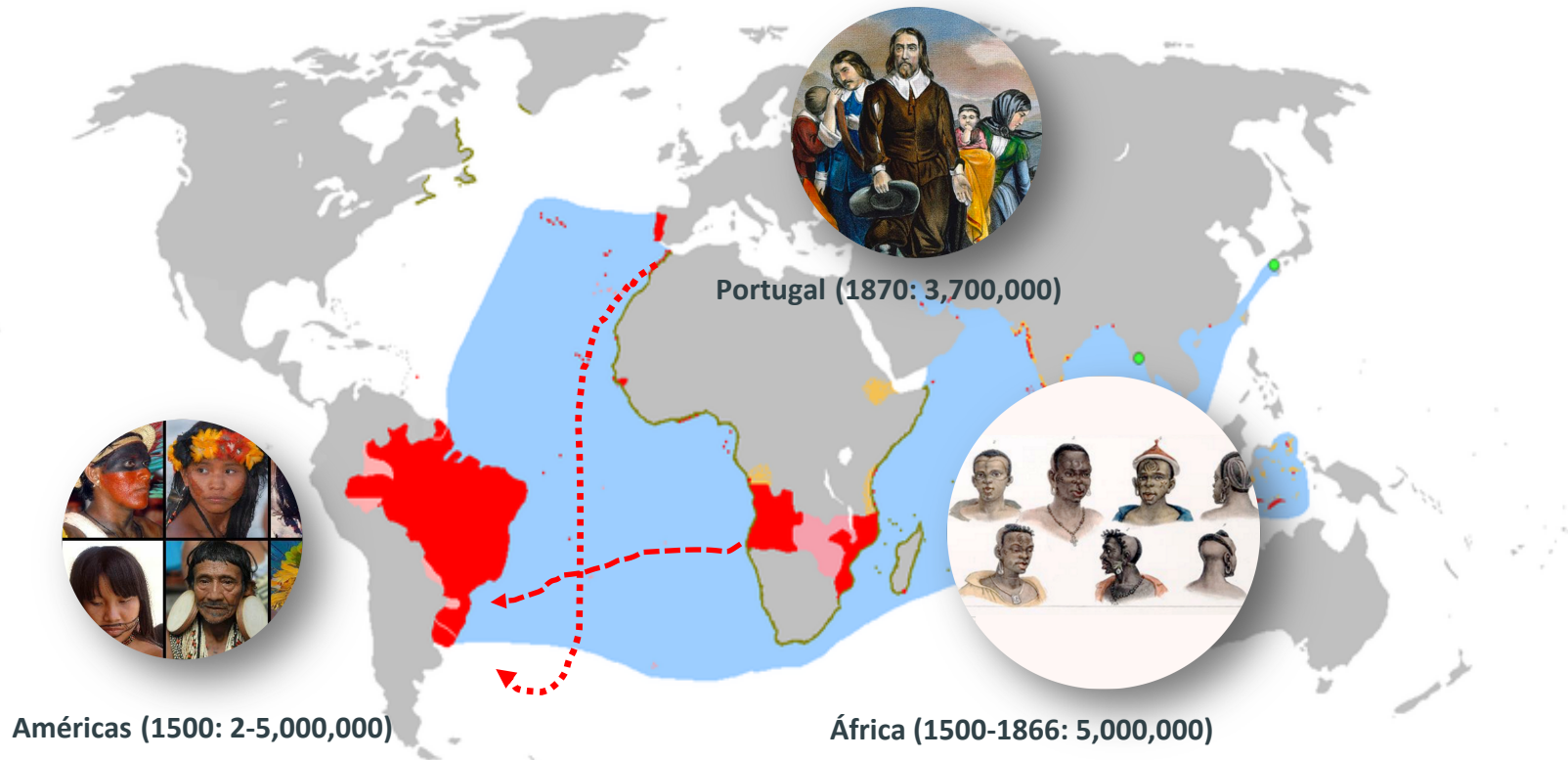


Unraveling the
Human Genome

The Missing Diversity in Human Genetic Studies

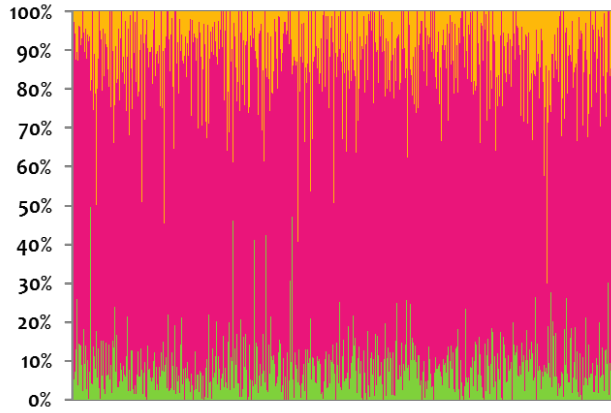


Genetic Background of the Brazilian Population

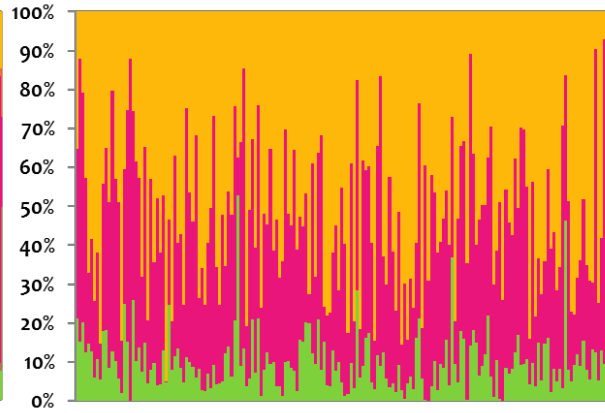


Brazilian Admixture

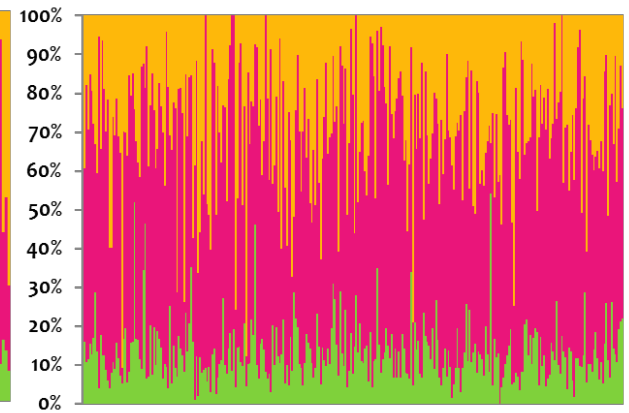
“white”



“black”



“mixed”



■ AFR ■ EUR ■ AMR



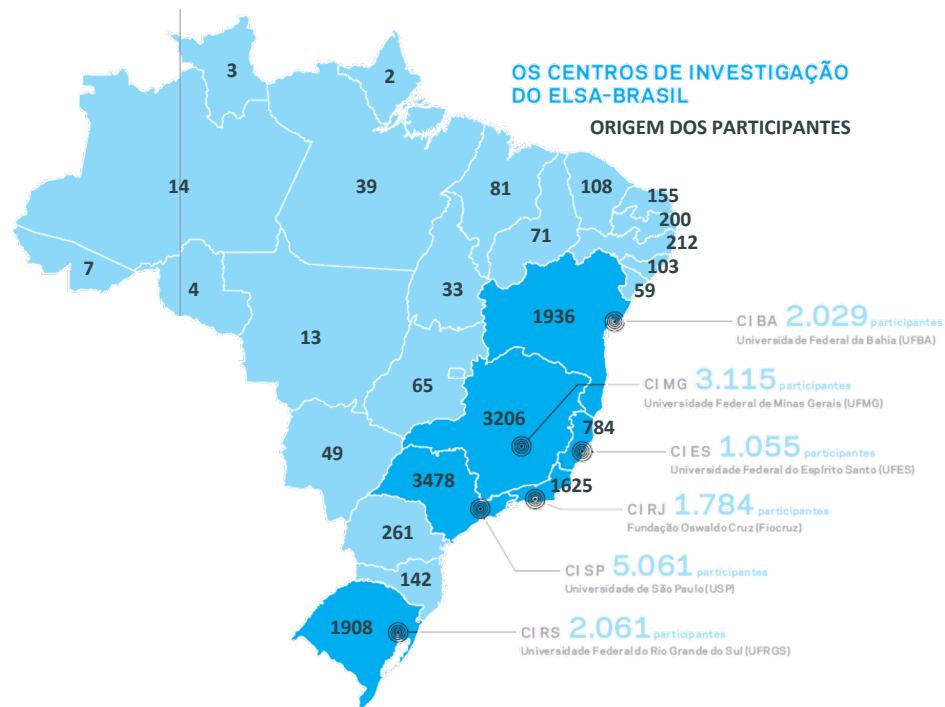
Estudo Longitudinal de Saúde do Adulto

ELSA BRASIL

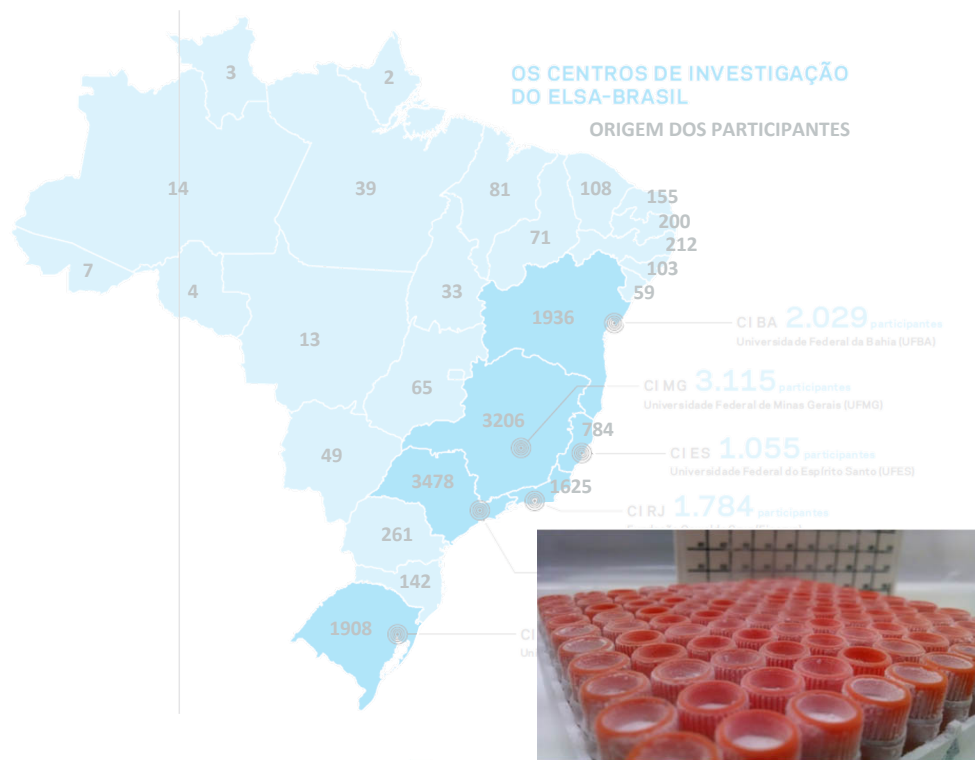


MINISTÉRIO DA
CIÊNCIA, TECNOLOGIA,
INOVAÇÕES E COMUNICAÇÕES

- Largest epidemiologic study in Brazil
- 15.105 public servers (35-74 yrs);
- Association btwn chronic diseases (cardiovascular/diabetes) and environmental/behaviour factors;
- Possible regional variations;



ELSA Brasil – Largest epidemiologic longitudinal study in Brazil



FUNDING ??

dasa

3.000 WGS

illumina®



Google Cloud

Processing/Storage



– the first 4 months



2.219



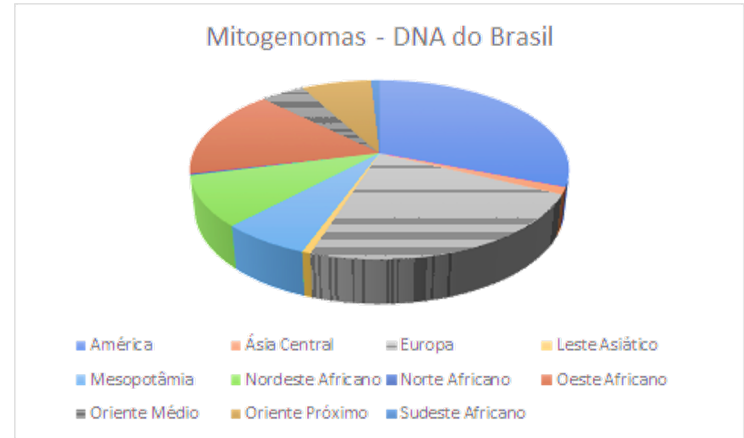
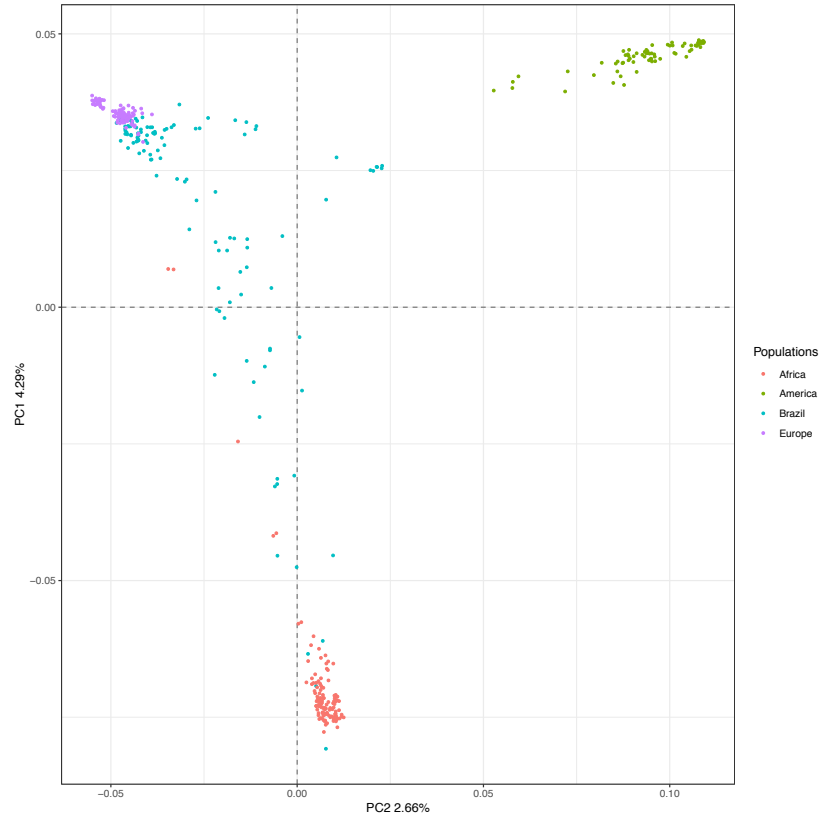
347



340



365

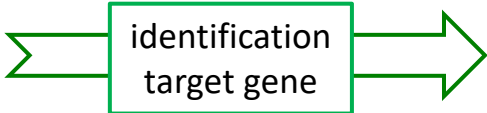




National Policy on Precision Medicine



GENOMICS



ADVANCED THERAPIES

POPULATIONAL

RARE DISEASES

GENE

CELL

BIOLOGICS



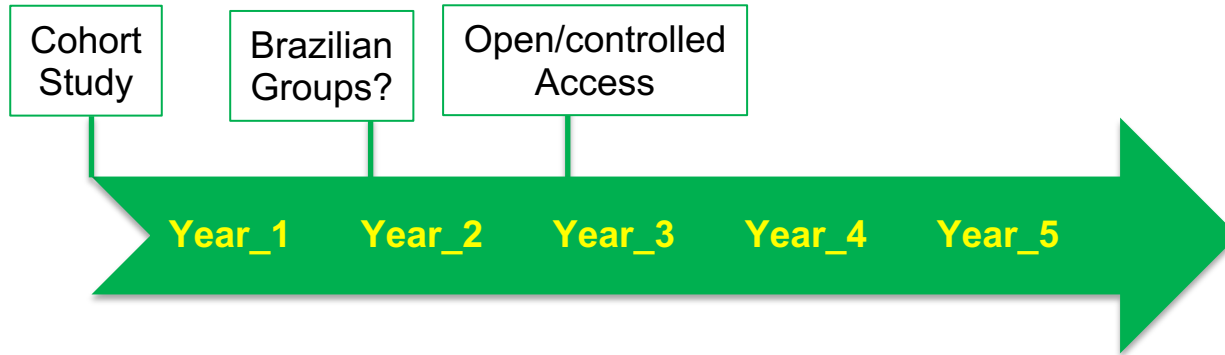
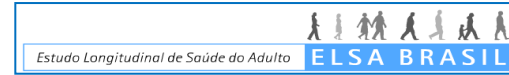
Brazilian Reference Genome

Diagnostic

Brazilian Reference Genome- Strategy

1. Leverage investment made in cohort studies (40.000 genomes):

1. Cohort Identification;
2. Harmonization of clinical data;
3. Sequencing;
4. Data access.



GENOMA REFERÊNCIA BRASIL - Strategy

1. Leverage investment made in cohort studies (40.000 genomes):
2. **Use Unified Public Health Service (SUS) to scale to 200k genomes:**
 1. Eletronic Health Records;
 2. Cost of sequencing;

Team



Lygia V. Pereira
Lab.Nac. Células-
Tronco
Embrionárias, USP



Tábita Hünemeier
Dept. Genética Biol.
Evol., USP
Native American
Genome Project
Consortium Analysis
Diversity Evolution
Latin Americans
(CANDELA)



José Geraldo Mill, UFES
Ma. Del Carmen Molina, UFES
Maria Inês Schmidt, UFRGS
Bruce Duncan, UFRGS
Paulo Lotufo, USP
Isabela Benseñor, USP
Rosane H Griep, FIOCRUZ-RJ
Ma. Jesus Fonseca, FIOCRUZ-RJ
Sandhi Barreto, UFMG
Luana Giatti, UFMG
Sheila Alvim, UFBA
Ma. Conceição Almeida, UFBA



Diogo Meyer
Dept. Genética
Biol. Evol., USP
Genética de
Populações
Humanas



**Alexandre
Pereira**
Harvard Medical
School
Genética Médica